

External Cervical Resorption

All you need to know about External Cervical Resorption is covered in the November issue of the IEJ (with free access)

External cervical resorption-part 1: histopathology, distribution and presentation

<https://onlinelibrary.wiley.com/doi/10.1111/iej.12942>

External cervical resorption: part 2 – management

<https://onlinelibrary.wiley.com/doi/10.1111/iej.12946>

The topic is summarised in the latest ESE Position Statement

<https://onlinelibrary.wiley.com/doi/10.1111/iej.13008>

VOLUME 51 • NUMBER 11 • NOVEMBER 2018

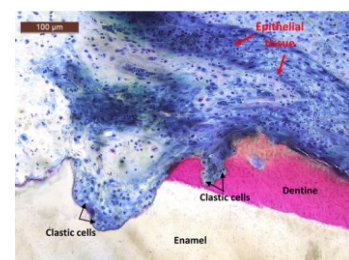
INTERNATIONAL
ENDODONTIC JOURNAL

The official journal of the British Endodontic Society and the European Society of Endodontology



View this journal online at <http://onlinelibrary.wiley.com/doi/10.1111/iej>

WILEY
Blackwell



ESE resources

News

Education

Publications

Biennial congresses

International Endodontic
Journal

Events

Research

For members

About the ESE

Contact the ESE



<https://www.facebook.com/EuSocEndo>



<https://www.linkedin.com/company/european-society-of-endodontology-ese-/>



<https://twitter.com/EuSocEndo>

Mailing address of the ESE for routine correspondence:-

ESE, PO Box 1978, Newport NP19 1DF, UK

Registered postal address of the ESE: -

Postboks 1237 Vika, 0110 Oslo, Norway