

## OFFICIAL ESE 2019 HOTELS

HOTEL	Catg.	DSU (€)	DBL/TWIN (€)	Transportation Hotel-ACV	Distance Hotel-ACV (km)	Transportation time between Hotel-ACV (min.)
<b>ARCOTEL KAISERWASSER HOTEL</b> Wagramer Str. 8, 1220 Wien, Austria	4* Sup	€ 242,00	€ 262,00	Walking Distance	1,2 Km	15 min.
<b>IBIS STYLES MESSE PRATER</b> Franzensbrückenstraße 26, 1020 Wien, Austria	3*	€ 186,00	€ 198,00	Metro	4 Km	17 min.
<b>IBIS WIEN MESSE</b> Schönbrunner Str. 92, 1050 Wien, Austria	3*	€ 120,00	€ 142,00	Metro	3 Km	15 min.
<b>LE MERIDIEN VIENNA</b> Robert-Stolz-Platz 1, 1010 Wien, Austria	5*	€ 303,00	€ 325,00	Metro	7 Km	20 min.
<b>MERCURE HOTEL WIEN CITY</b> Hollandstraße 3, 02. Leopoldstadt, 1020 Viena, Austria	4*	€ 153,00	€ 171,00	Metro	5 Km	20 min.
<b>NOVOTEL SUITES WIEN CITY DONAU</b> Radingerstraße 2, 1020 Wien, Austria	3*	€ 131,00	€ 147,00	Metro	3 Km	15 min.
<b>PARK INN UNO CITY</b> Wagramer Str. 16-18, 1220 Wien, Austria	4*	€ 171,00	€ 197,00	Walking Distance	1 Km	15 min.
<b>SOFITEL VIENNA STEPHANSDOM</b> Praterstraße 1, 1020 Wien, Austria	4*	€ 275,00	€ 297,00	Metro	5 Km	15 min.

### Arcotel Kaiserwasser Hotel – 4\*\*\*\* Superior



The 4-star superior ARCOTEL Kaiserwasser is located opposite Vienna's United Nations headquarters and the Austria Center Vienna, next to the Kaiserwasser pond with a bathing jetty. Rooms at ARCOTEL offer you an amazing view of the modern skyline of the DonauCity or the Kaiserwasser recreation area. Kaisermühlen Underground Station is just 100m away, and the city center can be reached in a 10-minute ride.

To go to the Austria Center you only need to walk 15 minutes alongside the New Danube River.

### Ibis Styles Messe Prater – 3\*\*\*

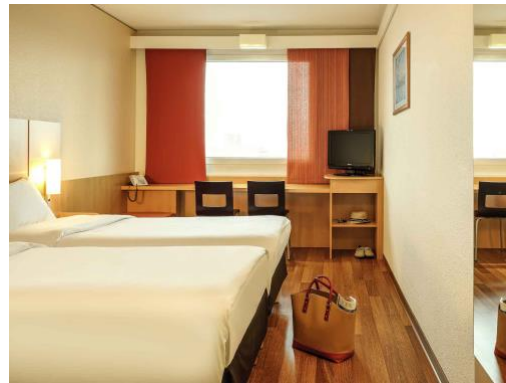


The Ibis Styles Wien Messe Prater hotel lies just a few hundred yards from the Prater park, exhibition center and the city center. Right on the doorstep is the Danube Canal.

The hotel is 400 m from the Prater and the Giant Ferris Wheel, it is close to the Messe Wien as well as to the Ernst Happel Stadion. Donauinsel can be reached within a few-minute metro ride. The city center is reachable within a 10-minutes walk.

To go to Austria Center you need to walk 6 minutes towards Nestroyplatz metro station catch **U1** Wien Leopoldau station and leave at Kaisermühlen VIC station, you'll find Austria Center in a distance of 6 minutes walking. (Approximately total of 17 minutes)

### Ibis Wien Messe Hotel – 3\*\*\*



The Ibis Wien Messe is conveniently located near the famous Prater amusement park (Riesenrad), the Reed Exhibitions Messe Wien and the Austria Center Vienna (congress center).

From the nearby Praterstern Wien Nord station (300 m), subway lines 1 and 2 take you to the old town within 5 minutes and the S7 train gets you to the Vienna International Airport within 20 minutes.

To go to Austria Center you only need to walk 5 minutes towards Vorgartenstraße metro station and hop off at Kaisermühlen VIC station, from there Austria Center will be at a 6 minutes walking. (Approximately total of 14 minutes)

### Le Meridien – 5\*\*\*\*\*



An individual design hotel in Vienna in the comfort zone. Le Méridien Vienna is style not bivouac, it is art puzzle and gallery. Located in the heart of Vienna, your view falls on Vienna's splendid Ringstrasse, the serene Schillerplatz, or sun-filled courtyard. At last in the Le Méridien design hotel is in the city's epicentre.

To go to the Austria Center you only need to walk 6 minutes towards Landstraße station catch the **U4** line and change the line at Landstraße, catch the **U1** Wien Heiligenstadt, and after 2 stops leave at Kaisermühlen VIC station, the venue will in a walking distance of about 6 minutes.

### Mercure Wien City Hotel – 4\*\*\*\*



The Mercure Wien City is a centrally located hotel with a modern atmosphere, only a few steps from the historic city center and the nearest subway station.

Guests can relax after a busy day in the city on the hotel's terrace. The modern and comfortable rooms are all air-conditioned.

Hotel Mercure Wien City features a 24-hour bar, which also serves fine wines, a parking garage (for an additional fee), and air-conditioned conference rooms.

To go to Austria Center you only need to walk 8 minutes towards Schwedenplatz metro station, catch the **U1** Wien Leopoldau and hop off at Kaisermühlen VIC station. (Approximately total of 20 minutes)



### **Novotel Suites Wien City Donau – 3\*\*\***



Novotel Suites Wien City is located in the immediate vicinity of the Messe Wien (exhibition and congress center) and the Austria Center, and only a 10-minute underground ride from the city center with famous sights like the St. Stephen's Cathedral.

To go to Austria Center you'll need to walk 4 minutes towards Vorgartenstraße metro station and hop off at Kaisermühlen VIC station, from there Austria Center will be at a 550m walking distance. (Approximately total of 13 minutes)

Sights like St. Stephen's Cathedral, the State Opera, the Hofburg (Imperial Palace) and the Hundertwasser House, as well as the famous Kärntnerstraße shopping street, are within walking distance.

### **Park Inn Uno City Hotel – 4\*\*\*\***



Located just 3 kilometers from the city center, our Vienna hotel is 100 meters from the United Nations Head Office and 500 meters from the Austria Center. There's a metro station just 100 meters away, and the Vienna International Airport (VIE) lies 20 kilometers from the hotel.

To go to the Austria Center you only need to walk 13 minutes towards the venue alongside Kaisermühlen park.

## Sofitel Vienna Stephansdom – 5\*\*\*\*\*



Designed by the famous architect Jean Nouvel, this stylish hotel offers panoramic views over Vienna, a gourmet restaurant, a gym, and a 2461 ft<sup>2</sup> spa area where guests can relax free of charge. SO Vienna is located in the center of the city, only a short walk from all major attractions.

Combining traditional Viennese architecture with modern design, the SO Vienna features an elegant glass façade, a spacious lobby with video ceilings and a vertical garden.

The entirely glass-walled Restaurant and Bar Das LOFT on the 18th floor provides direct views of St. Stephen's Cathedral.

The Schwedenplatz Underground Station (lines U1 and U4) is just across the Schwedenbrücke (bridge) on the other side of the Danube Canal.

To go to Austria Center you need to walk 6 minutes from SO Vienna towards the Schwedenplatz station and catch **U1** Wien Leopoldau station and leave at kaisermühlen VIC station, you'll find Austria Center in a distance of 6 minutes walking. (Approximately total of 16 minutes)

St. Stephen's Cathedral, in the very heart of the city, is only a 10-minute walk away.